

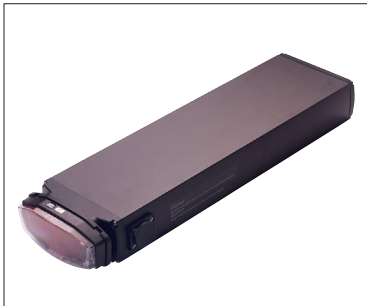
P2

Center motor & carrier 6 battery

28", 36V, center display, torque sensor & f/coaster brake

- Superior driving experience
- Reduced noise
- Added functionalities in displays and motors
- UART communication
- Battery capacity 7,8 AH - 17,4 AH*
- Real time information
- EMC tested according to EN15194

VS 1



Carrier 6 battery*



Carrier 6



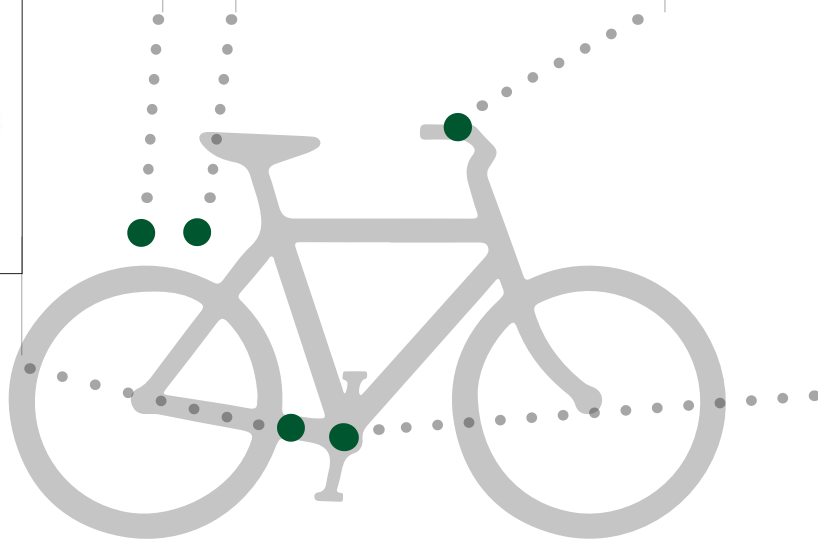
Center display w/throttle



Speed sensor for center motor



Center motor, torque sensor and f/coaster brake



Predefined e-kit solutions (60260)

		Part no.
Motor	Center motor, 250W	50371
Sensor	Speed sensor for center motor	50374
Mounting kit	Accessories for centermotor	

		Part no.
Display	Center w/throttle & handlebar Ø22	50935
Carrier	Carrier 6	60018
Battery	Carrier 6	

Incl. all necessary parts for mounting.
*Battery not included - various capacities are available.

Options on the next page

P2

Center motor & carrier battery

28", 36V, center display, torque sensor & f/coaster brake

OPTIONS			
Motor	Center motor with torque sensor, f/freewheel	1	
Shiftsensor	Shift sensor for center motor /int. gear	2	
Display	Minimal LCD / LED	3	Slim display LCD / LED 4
Light	Wire for light		Front lamp + wire

STANDARD WIRE LENGTHS			
	Extension wire from motor	Components	Total
Shift sensor	700 mm	700 mm	1400 mm
Light	700 mm		700 mm
Display	700 mm	600/800 mm	1300/1500 mm
Motor:			
Battery connection		680 mm	680 mm
Speed sensor		220 mm	220 mm
Connection for extension wire		130 mm	130 mm



- Slim display LCD/LED are all available with buttons or throttle.
- This e-kit is also available for 26".
- For suitable frames see our frame catalog.

Have in mind that non-predefined options are special orders, expect longer delivery time and a minimum quantity.

OPTIONS



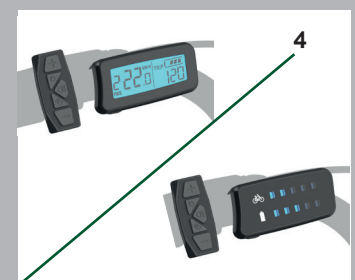
Center motor with torque sensor, f/freewheel (50361)



Shift sensor for centermotor / int. gear (50373)



Minimal display LCD / LED (50707-2 / 50706)



Slim display LCD / LED (50946 / 50947 w/buttons 50943 / 50944 w/throttle)