

**P3**

# Front motor & carrier 6 battery

28", 36V, LED display & speed sensor

- Superior driving experience
- Reduced noise
- Added functionalities in displays and motors
- EMC tested according to EN15194
- Battery capacity 7,8 AH - 17,4 AH\*
- Real time information
- UART communication

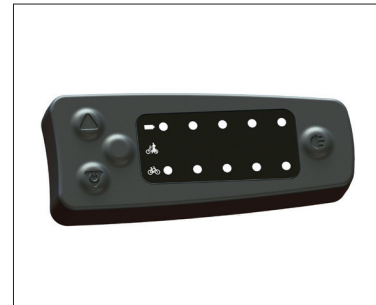
VS 1



Carrier 6 battery\*



Carrier 6



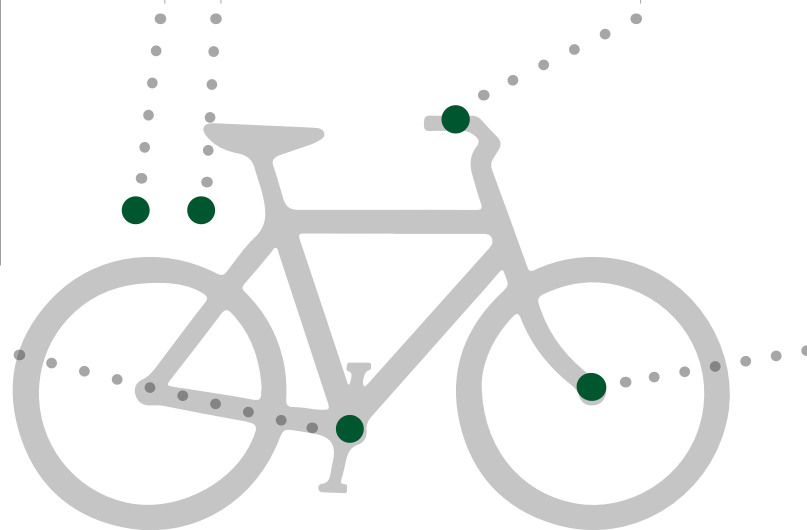
5 LED w/walk assist, light



Speed sensor



Front motor w/free wheel



## Predefined e-kit solutions (60261)

		Part no.
<b>Motor</b>	Front motor w/free, *16-pol, 100 mm	50275-2-BL*16-pol
<b>Controller</b>	36V, Uart communication ECO mode, socket box	51101-S03-195-E-0
<b>Sensor</b>	Speed sensor compact	50960

		Part no.
<b>Display</b>	5 LED w/walk assist, light control	50713
<b>Carrier</b>	Carrier 6	60015
<b>Battery</b>	Carrier 6	

Incl. all necessary parts for mounting.  
\*Battery not included - various capacities are available.

Options on the next page

# Front motor & carrier 6 battery

28", 36V, LED display & speed sensor

OPTIONS			
<b>Motor</b>	Color - silver	Motor f/rollerbrake	Motor f/discbrake
<b>Sensor</b>	Hollowtech	Torque sensor *	
<b>Display</b>	Minimal control <b>1</b> LCD /LED, W/throttle	Slim display <b>2</b> LCD / LED	Center display <b>3</b> LCD
<b>Light</b>	Wire for light	Front lamp + wire	

STANDARD WIRE LENGTHS			
	Extension wire from Controller	Components	Total
<b>Motor wire</b>	1720 mm	200 mm	1920 mm
<b>Light</b>	1650 mm		1650 mm
<b>Display</b>	1350 mm	800 mm	2150 mm
<b>Sensor</b>		750 mm	750 mm

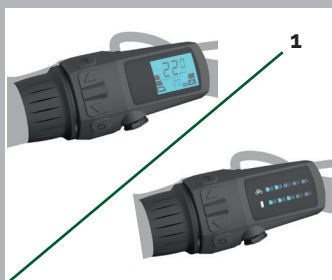


This e-kit is also available for 26".

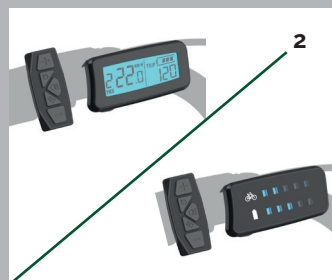
- \*Note! When choosing the torque sensor the frame will change.
- Slim display LCD/LED and Center display LCD are all available with buttons or throttle.
- This e-kit is also available in ECO mode and for 26" in ECO / SPEED mode.
- For suitable frames see our frame catalog.

*Have in mind that non-predefined options are special orders, expect longer delivery time and a minimum quantity.*

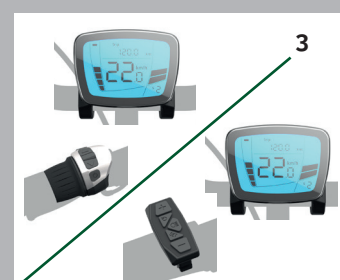
OPTIONS



Minimal display LCD / LED  
(50707-2 / 50706)



Slim display LCD / LED  
(50946 / 50947 w/button  
50943 / 50944 w/throttle)



Center display LCD  
(50935 w/throttle /  
50986 w/buttons)