

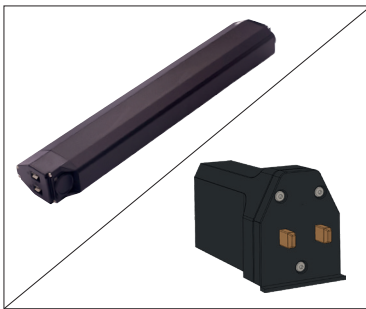
P4

# Rear motor & downtube-1 battery

28", 36V, LCD display & speed sensor

- Superior driving experience
- Reduced noise
- Added functionalities in displays and motors
- Battery capacity 7,8 AH - 13,6 AH\*
- Real time information
- EMC tested according to EN15194

VS 1



Downtube-1 battery & socket box controller\*



Downtube



Minimal display LCD



Rear motor w/free wheel  
f/discbrake



Speed sensor



## Predefined e-kit solutions (60254)

		Part no.
Motor	Rear motor w/freewheel f/discbrake	50609-1-BL
Controller	Socket box, SPEED mode	51102-S04
Sensor	Speed sensor + compact	50960

		Part no.
Display	Minimal display LCD	50707-2
Battery	Downtube-1	

Incl. all necessary parts for mounting.  
\*Battery not included - various capacities are available.

Options on the next page

**P4**

# Rear motor & downtube-1 battery

28", 36V, LCD display & speed sensor

OPTIONS			
<b>Motor</b>	Color - silver	Power motor <b>1</b>	
<b>Sensor</b>	Hollowtech	Torque sensor *	
<b>Display</b>	Slim display <b>2</b> LCD / LED	Center display <b>3</b> LCD	5 LED w/walk assist, <b>4</b> light
<b>Light</b>	Wire for light	Front lamp + wire	

STANDARD WIRE LENGTHS			
	Extension wire from Controller	Components	Total
<b>Motor wire</b>	1020 mm	220 mm	1240 mm
<b>Light</b>	300 mm		300 mm
<b>Display</b>		800 mm	800 mm
<b>Sensor</b>		750 mm	750 mm



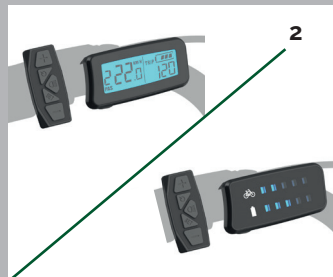
- \*Note! When choosing the torque sensor the frame will change.
- Slim display LCD/LED, Center display LCD and Minimal display LED are all available with buttons or throttle.
- This e-kit is also available in ECO mode and for 26" in ECO / SPEED mode.
- For suitable frames see our frame catalog.

*Have in mind that non-predefined options are special orders, expect longer delivery time and a minimum quantity.*

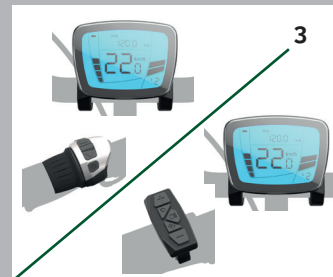
OPTIONS



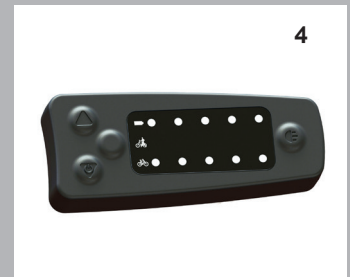
Power motor  
(50750)



Slim display LCD / LED  
(50946 / 50947 w/buttons  
50943 / 50944 w/throttle)



Center display LCD  
(50935 w/throttle /  
50986 w/buttons)



5 LED w/walk assist, light  
(50713)